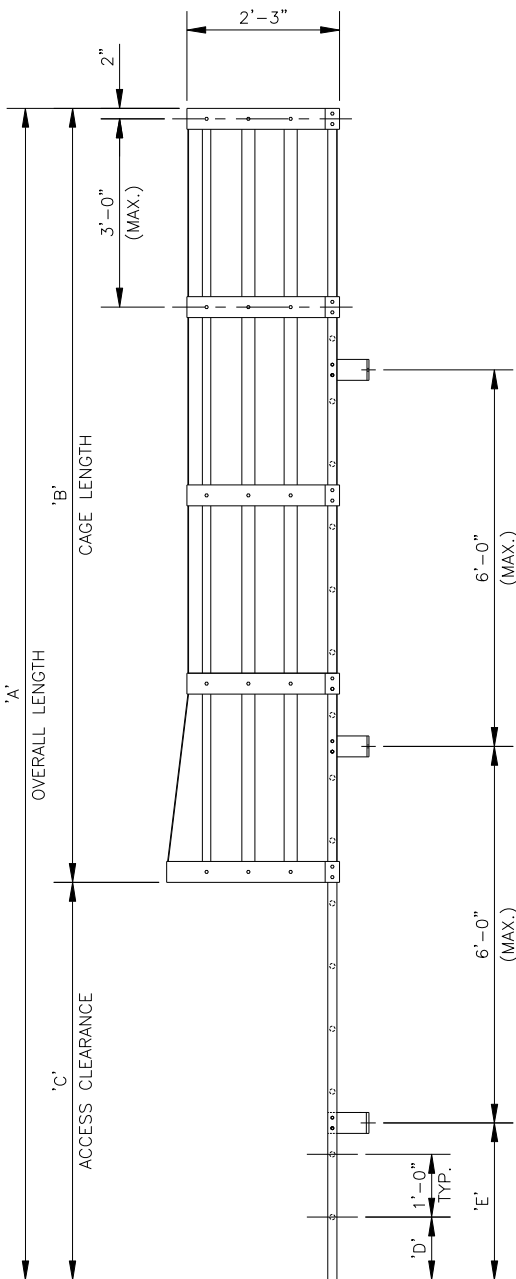
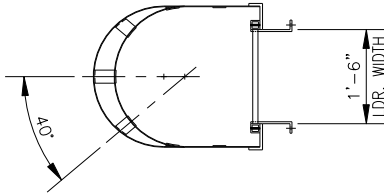
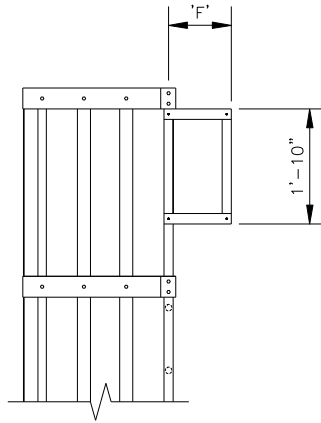


FRP LADDER TYPE	UNITS	'A'	'B'	'C'	'D'	'E'	STANDOFF CLIP TYPE NO.	RAIL EXTENSION TYPE NO.	BASE CLIPS
SAMPLE - TYPE F3	2	25'-6"	0'-6"	2'-0	1'-0	1'-0	S2	R1	Y

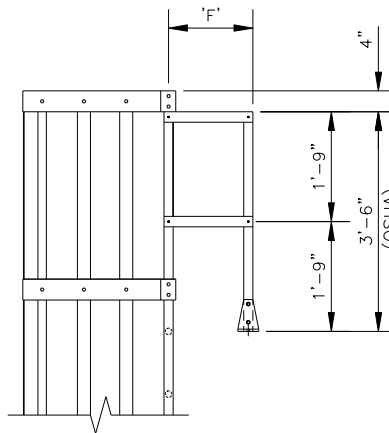
SEE SHEET 3 OF 3 FOR STAND-OFF CLIP AND WALK-THRU OPTIONS.



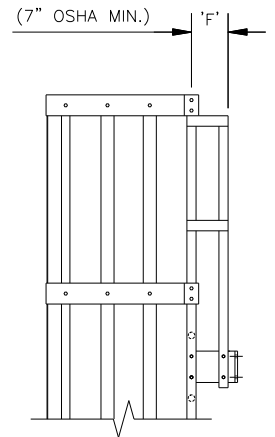
STANDARD FRP CAGED LADDER - TYPE C1



FRP CAGED LADDER - TYPE C4



FRP CAGED LADDER - TYPE C2



FRP CAGED LADDER - TYPE C3

FRP CAGED LADDER MATERIALS

- LADDER SIDE RAIL = 1 3/4" x 1 3/4" x 1/4" SQUARE TUBE.
- LADDER RUNG = 1 1/4" DIAMETER FLUTED RUNG.
- SAFETY CAGE HORIZONTAL HOOP = 4" x 1/8" FLAT BAR.
- SAFETY CAGE VERTICAL BAR = 2 1/2" x 3/16" FLAT BAR.
- SAFETY CAGE CLIP = 5" x 2 3/4" x 1/2" x 0'-4" LONG ANGLE.
- SAFETY CAGE HARDWARE = 316 STAINLESS STEEL, 3/8" DIAMETER BOLTS, NUTS, AND WASHERS.
- LADDER STANDOFF CLIP = 7 7/8" x 2 3/16" x 0'-4" LONG ANGLE.
- LADDER BASE CLIP = 3" x 3" x 3/8" x 0'-1 3/4" LONG FRP ANGLE.
- LADDER HARDWARE = 316 STAINLESS STEEL, 3/8" DIAMETER BOLTS, NUTS, AND WASHERS.

STRUCTURAL FIBERGLASS, INCORPORATED

BUSINESS ROUTE 220 NORTH, POST OFFICE BOX 615, BEDFORD, PA 15522

THIS DRAWING, AND THE INFORMATION CONTAINED HEREIN, IS THE PROPERTY OF SFI AND IS NOT TO BE REPRODUCED, DISTRIBUTED, OR DISCLOSED IN ANY MANNER WITHOUT WRITTEN CONSENT FROM SFI.

TITLE SPECIFICATION WORKSHEET
FRP CAGED LADDERS

DWG. NO. WS-1000

SHT. NO. 1
OF 3