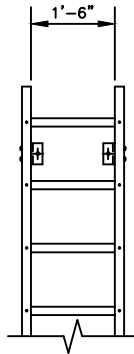
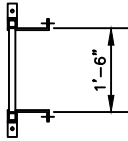


FRP LADDER TYPE	UNITS	'A'	'B'	'C'	'D'	STANDOFF CLIP TYPE NO.	RAIL EXTENSION TYPE NO.	BASE CLIPS
SAMPLE - TYPE F3	2	25'-6"	0'-6"	2'-0"	1'-0"	S2	R1	Y

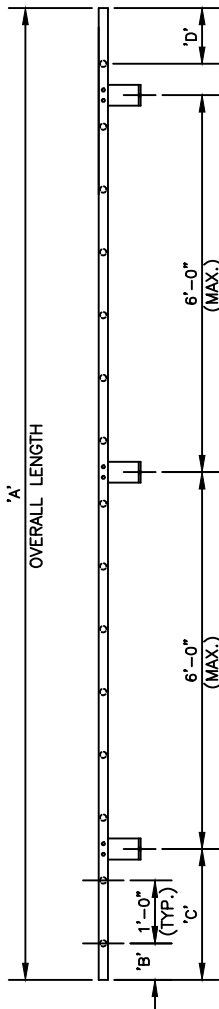
SEE SHEET 3 OF 3 FOR STAND-OFF CLIP AND WALK-THRU OPTIONS.

FRP LADDER MATERIALS

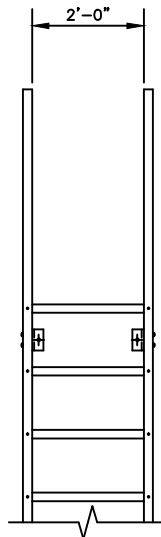
- LADDER SIDE RAIL = 1 3/4" X 1 3/4" X 1/4" SQUARE TUBE.
- LADDER RUNG = 1 1/4" DIAMETER FLUTED RUNG.
- LADDER STANDOFF CLIP = 7 7/8" X 2 3/16" X 0-4" LONG ANGLE.
- LADDER BASE CLIP = 3" X 3" X 3/8" X 0-1 3/4" LONG FRP ANGLE.
- LADDER HARDWARE = 316 STAINLESS STEEL, 3/8" DIAMETER BOLTS, NUTS, AND WASHERS.



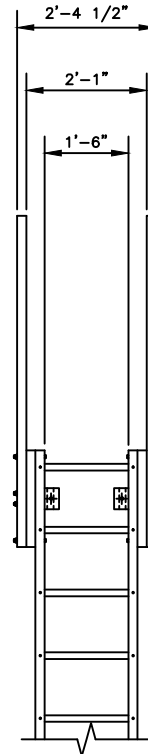
NO WALK-THRU - TYPE F1



STANDARD FRP LADDER - TYPE F1



24" WALK-THRU - TYPE F2



25" WALK-THRU - TYPE F3

STRUCTURAL FIBERGLASS, INCORPORATED

BUSINESS ROUTE 220 NORTH, POST OFFICE BOX 615, BEDFORD, PA 15522

THIS DRAWING, AND THE INFORMATION CONTAINED HEREIN, IS THE PROPERTY OF SFI AND IS NOT TO BE REPRODUCED, DISTRIBUTED, OR DISCLOSED IN ANY MANNER WITHOUT WRITTEN CONSENT FROM SFI.

TITLE SPECIFICATION WORKSHEET
FRP FIXED LADDER

DWG. NO. WS-1000 SHT. NO. 2 OF 3